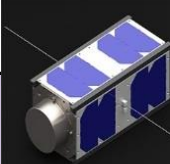
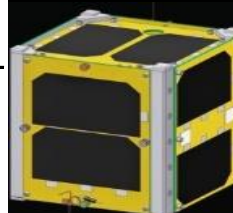
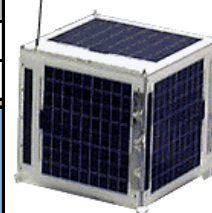


Active FM Satellite Frequencies - KA7FVV Satellite Reference

Updated: 07/2017

SO-50	V/u	Use a 74.4 hz tone to turn the transmitter on. Satellite has a 10 minute timer. Always use 67.0 hz tone when using transponder.							
Doppler Adjust	Downlink	436.815	436.810	436.805	436.800	436.795	436.790	436.785	436.780
Tone: 67.0	Uplink					145.850			
		AOS				MID			LOS
Doppler Adjust	Downlink	436.805	436.800	436.795	436.790	436.785	Alternate doppler programming based on what I have found HRD adjust for doppler during a pass.		
Tone: 67.0	Uplink			145.850					
		AOS		MID		LOS			
ISS Voice	VHF		APRS	VHF		ISS Repeater			
	Downlink	145.800	Downlink	145.825			145.800		
-1.31	Uplink	144.490	Uplink	145.825	437.040	437.045	437.050	437.055	437.060
AO-85	U/v	Launched October 2015							
	Downlink	145.980	145.980	145.980	145.980	145.975	Per AMSAT Fox-1A Guide		
Tone: 67.0	Uplink	435.160	435.165	435.170	435.175	435.180			
		AOS		MID		LOS			
LilacSat-2	V/u	Launched September 2015							
	Downlink	437.210	437.205	437.200	437.195	437.190			
No Tone	Uplink			144.350					
		AOS		MID		LOS			
LilacSat-1	V/u	Launched May 2017 from ISS							
	Downlink	436.520	436.515	436.510	436.505	436.500	This sat uses FM uplink and a digital downlink. Please see my satellite page for details.		
Tone: 67.0	Uplink			145.985					
		AOS		MID		LOS			



|